

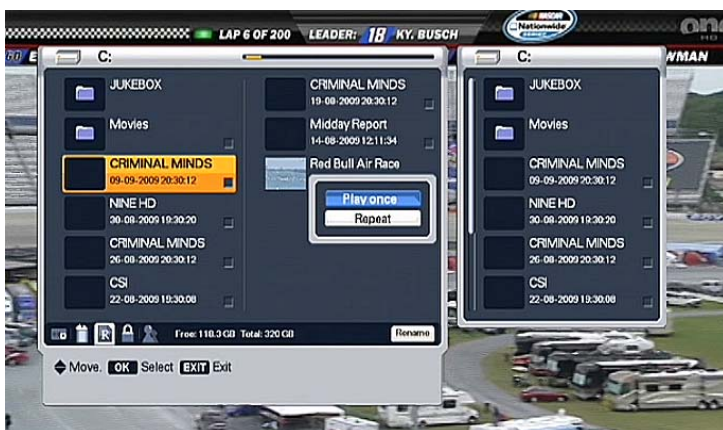
How do I play a recorded file?

Note: The Homecast PVR can only play jpg photos from an external FAT32 formatted USB hard drive or memory stick. The only video files that can be played are recordings from a HT8200 or HT8000 (or mpeg2-ts files that have been converted to Homecast .tp0 files), and these must be on the PVR's internal hard drive.

1. Switch on the Homecast PVR and wait for a picture to show on the screen. If a picture doesn't appear, your PVR may need to scan your channels first – See "How do I do a Channel Scan?"
2. Press the LIST button (below the FF button) on the remote to bring up the File Player.
3. Press the ◀▶ ARROW buttons to move between File List and Photo Viewer (listed on the bottom). Highlight File List and press OK



4. Press the ▲▼ ARROW buttons to move between the recordings.
5. To play a recorded file, use the ▲▼ ARROW buttons to highlight the file and press OK, then use the ▲▼ ARROW buttons to select Once or Repeat and press OK begin playing it.
6. Press EXIT to close the File Viewer.
7. Use the ◀▶ ARROW buttons to jump 30 seconds at a time forwards and backwards through the file.



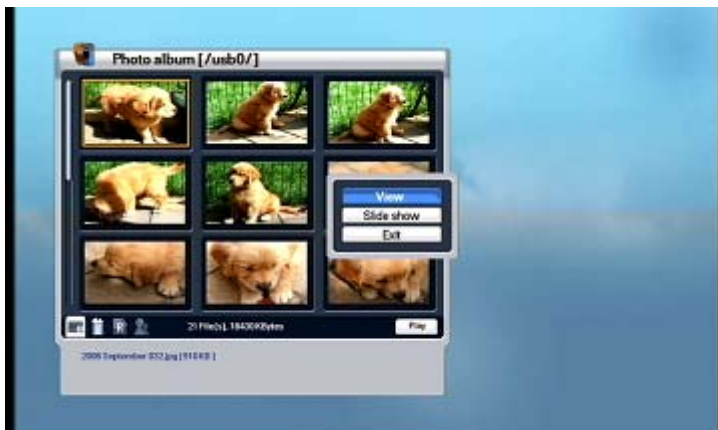
8. Use the PAUSE button on the remote to pause the playback. Use the PAUSE button to resume viewing. Pause is displayed on the screen (top right hand side).
9. Press the number buttons to jump a percentage in file ie 3 = 30%, 9 = 90% etc.
10. Use the STOP button on the remote to stop playing the file.

Note: You can also use the FF and REW and SLOW FWD buttons to move through the file. The PLAY button resumes normal play time. Repeated pressing of the FF and REW buttons will increase the play speed by x2 x3 and x4.

11. You can view Pictures on an external HDD or USB memory stick. Connect the USB HDD or memory stick, then follow step 3, but select Photo Viewer (listed on the bottom) and press OK



12. Use the ▲▼ ARROW buttons to highlight the bold USB device and press OK.
13. The files on the USB device will be scanned and thumbnail pictures will appear in a window.
14. Use the ▲▼◀▶ ARROW buttons to highlight the photo you want to view and press OK, then either select View, Slideshow or Exit.



FOR MORE DETAILED INFORMATION REFER TO CHAPTER 9.4 IN THE MANUAL